

**Cathepsin B Antibody**  
**Rabbit mAb**  
**Catalog # AP91202****Specification****Cathepsin B Antibody - Product Information**

Application	WB, IHC, ICC, IP
Primary Accession	<a href="#">P07858</a>
Clonality	Monoclonal
<b>Other Names</b>	
APPS; Cathepsin B heavy chain; Cathepsin B1; CathepsinB; CPSB; CTSB; cysteine protease; Preprocathepsin B;	
Isotype	Rabbit IgG
Host	Rabbit
Calculated MW	37822 Da

**Cathepsin B Antibody - Additional Information**

Dilution	WB~~1:1000 IHC~~1:100~500 ICC~~N/A IP~~N/A
Purification	Affinity-chromatography
Immunogen	A synthesized peptide derived from human Cathepsin B
Description	Thiol protease which is believed to participate in intracellular degradation and turnover of proteins. Has also been implicated in tumor invasion and metastasis.
Storage Condition and Buffer	Rabbit IgG in phosphate buffered saline , pH 7.4, 150mM NaCl, 0.02% sodium azide and 50% glycerol. Store at +4°C short term. Store at -20°C long term. Avoid freeze / thaw cycle.

**Cathepsin B Antibody - Protein Information****Name** CTSB**Synonyms** CPSB**Function**

Thiol protease which is believed to participate in intracellular degradation and turnover of proteins (PubMed:<a href="http://www.uniprot.org/citations/12220505" target="\_blank">12220505</a>). Cleaves matrix extracellular phosphoglycoprotein MEPE (PubMed:<a href="http://www.uniprot.org/citations/12220505" target="\_blank">12220505</a>). Involved in the solubilization of cross-linked TG/thyroglobulin in the thyroid follicle lumen (By similarity). Has

also been implicated in tumor invasion and metastasis (PubMed:<a href="http://www.uniprot.org/citations/3972105" target="\_blank">3972105</a>).

#### Cellular Location

Lysosome. Melanosome. Secreted, extracellular space {ECO:0000250|UniProtKB:A1E295}. Apical cell membrane {ECO:0000250|UniProtKB:P10605}; Peripheral membrane protein {ECO:0000250|UniProtKB:P10605}; Extracellular side {ECO:0000250|UniProtKB:P10605}. Note=Identified by mass spectrometry in melanosome fractions from stage I to stage IV (PubMed:17081065) Localizes to the lumen of thyroid follicles and to the apical membrane of thyroid epithelial cells (By similarity) {ECO:0000250|UniProtKB:P10605, ECO:0000269|PubMed:17081065}

#### Tissue Location

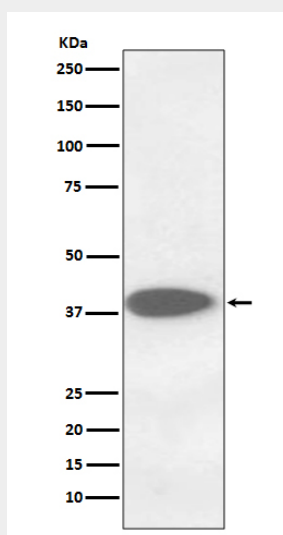
Expressed in the stratum spinosum of the epidermis. Weak expression is detected in the stratum granulosum

### Cathepsin B Antibody - Protocols

Provided below are standard protocols that you may find useful for product applications.

- [Western Blot](#)
- [Blocking Peptides](#)
- [Dot Blot](#)
- [Immunohistochemistry](#)
- [Immunofluorescence](#)
- [Immunoprecipitation](#)
- [Flow Cytometry](#)
- [Cell Culture](#)

### Cathepsin B Antibody - Images



Western blot analysis of Cathepsin B expression in A375 cell lysate;.